

Intentionally Serving Our
First-Generation
Students of Color
Through Mission
Integration
for a Holistic Approach
to Student Well-Being

Janel Owens, VP, Student Affairs

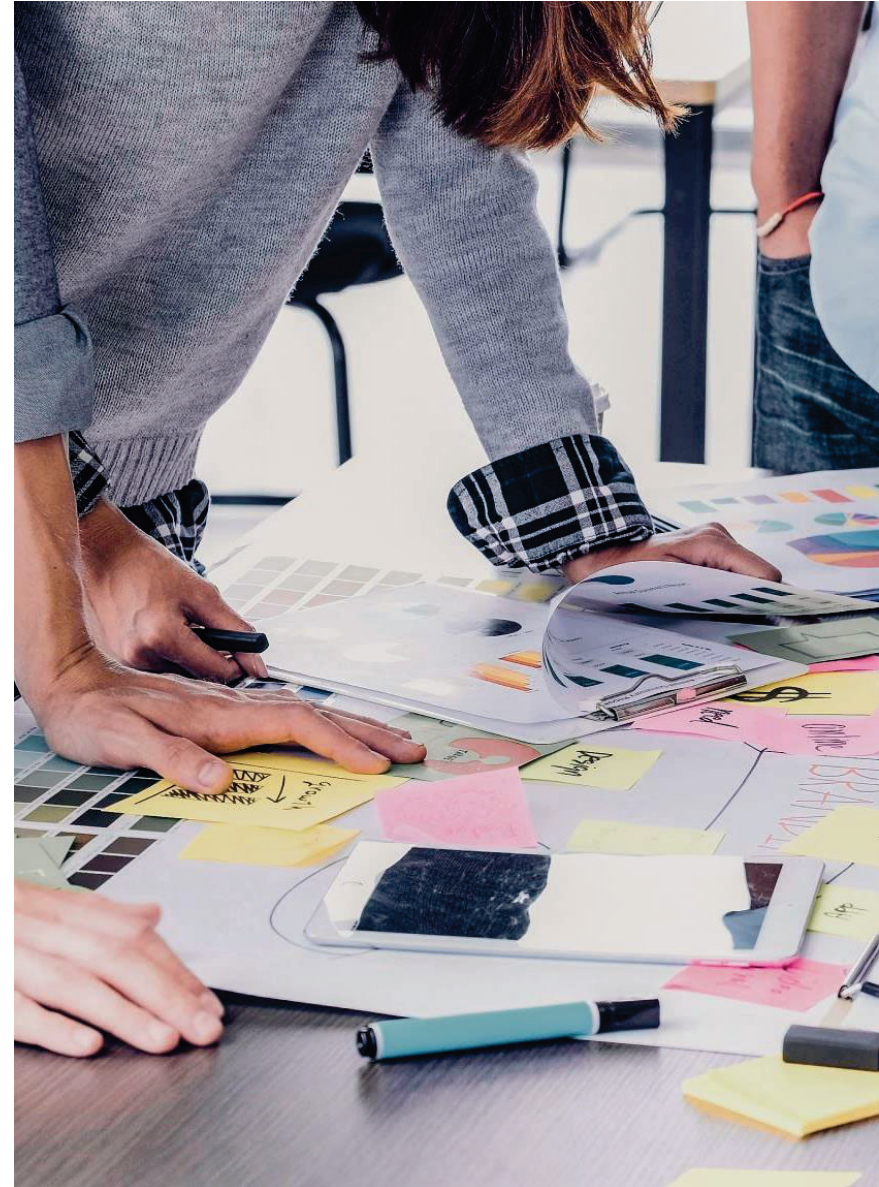
Mehtap Ferrazzano, AVP, Student Life

*Kathy Murray, Director, Counseling and
Wellness Services*



LEARNING OBJECTIVES:

1. Attendees will leave with a network of folks from session to continue to share resources and ideas.
2. Attendees will understand how to incorporate mission and values through support services.
3. Attendees will have a better understanding of first-generation students of colors needs when it comes to transitions and adjustments.
4. Attendees will understand the value of incorporating families when working with first generation students of color.
5. Attendees will hear about various online portals and tools that have been successful at Felician University.



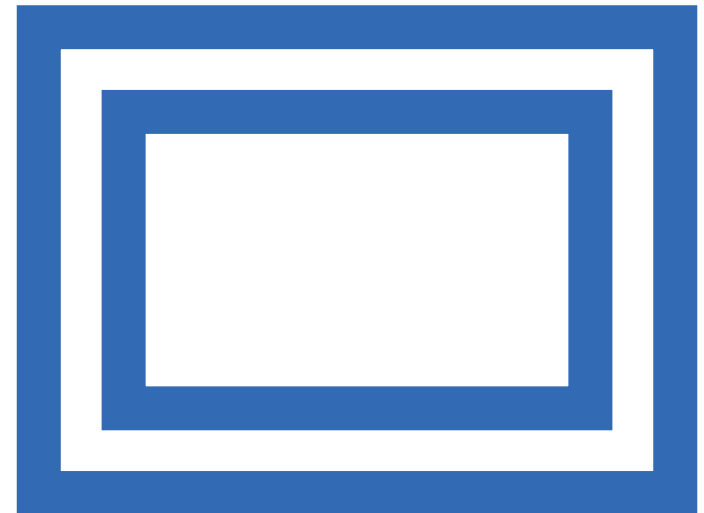
Frame Work

Promoting Success for FGSOC through the Social Justice Lens by Identifying Barriers and Reflecting to Create Intentional and Distinct Support

Schuyler, Sophie W.; Childs, Jonique R.; and Poynton, Timothy A. (2021) "Promoting Success for First-Generation Students of Color: The Importance of Academic, Transitional Adjustment, and Mental Health Supports," *Journal of College Access*: Vol. 6 : Iss. 1 , Article 4. Available at: <https://scholarworks.wmich.edu/jca/vol6/iss1/4>

Intersectionality and significance for FGSOC

Crenshaw, K. (1991). Mapping the margins: intersectionality, identity politics, and violence against women of color. *Stanford Law Review*, 43(6), 1241-1299.



FGSOC Barriers Experienced for Felician Students



- Basic Needs
- Survival Mode
- Multiple Roles
- Completion rates which can lead to financial burden
- Challenges with integrating their own cultural values and their university culture
- Resilience but experiencing increase psychological and social difficulties

TIME TO REFLECT AND **CONNECT**

- I. What are your institution's values?
- II. How do they guide your work?
- III. How are the values serving first-generation students of color?
- IV. How are you being more intentional about mental health and support services for first-generation students of color?
- V. What are some identified gaps for FGSOC that can help create opportunities?



Felician Fast Facts



- Catholic Franciscan
- MSI/HSI
- Founded as Immaculate Conception Normal School in 1923 by the Felician Sisters of Lodi, New Jersey.
- One of 24 Franciscan universities in the United States and the only in New Jersey.
- Locations: Lodi and Rutherford
- Enrollment: 2,236

FELICIAN UNIVERSITY
STUDENTS

FIRST
GENERATION
STUDENTS
OF COLOR

Student Data			
Particulars	No. of Students		
	Fall 2021	Fall 2022	Fall 2023
Total UG Students Enrolled	1999	1746	1784
First Generation Students	846	771	773
First Generation Students Demographic			
Race and Ethnicity	Fall 2021	Fall 2022	Fall 2023
American Indian/Alaskan Native	1	3	2
Asian	32	26	26
Black/African American	215	186	170
Native Hawaiian or Other Pacific	2	1	0
Hispanic/Latino	375	382	405
Non-Res Alien	2	1	2
Two or more Races	14	12	15
Unknown	30	17	14
White	175	143	139
Total	846	771	773

Felician Franciscan Values

RESPECT FOR HUMAN DIGNITY

TRANSFORMATION

COMPASSION

SOLIDARITY WITH PEOPLE IN
NEED

JUSTICE AND PEACE



RESPECT FOR HUMAN DIGNITY

our reverence for and commitment
to promoting and protecting the
dignity of persons.



RESPECT FOR HUMAN DIGNITY

- Hired Vice President for Mission Integration/ Safe Spaces
- CARE TEAM (Expansion)
- Falcon Impact
(*Collaborative Early Alert System*)

INTRODUCING FELICIAN UNIVERSITY'S CARE TEAM

Felician University's Coordinate, Assess, Response, and Education (CARE) Team is dedicated to campus safety and wellness.

Who's on the Team?
Members from various university departments such as Dean of Students, Counseling Services, Security, and more. Additional experts are brought in as needed.

How to Refer a Student?
Submit a Student of Concern Referral through Falcon Impact in your My Felician portal. Use the Falcon Impact Form or contact CareTeam@felician.edu for assistance. You can also reach the Office of the Dean of Students during business hours.

OPEN TO ALL!

REPORT HERE

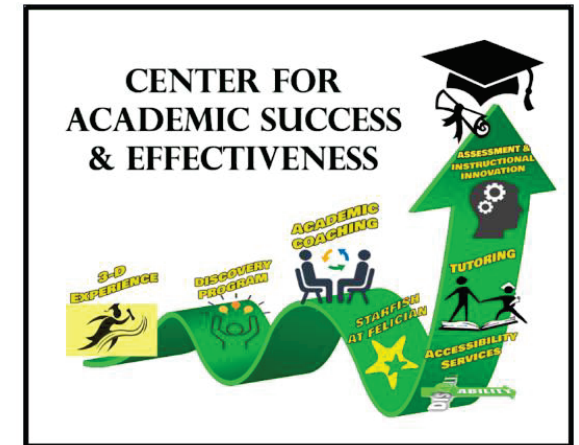
SOLIDARITY WITH PEOPLE IN NEED

ensuring the needs of the
vulnerable are met through
advocacy and action



SOLIDARITY WITH PEOPLE IN NEED

- Counseling & Wellness (merging and access)
- CASE
- Student Led Service Programs
- Distress Programs
- Dean of Students Office emphasis on holistic and need approach



TRANSFORMATION

The process that encourages an open mind and heart, leading to continuous improvement of the person and ministry





TRANSFORMATION

- Integration of family support and partnership
- Bilingual Content/Feedback
- Family Portal/On-boarding
- Re-envisioned Family & New Student Orientation
- Holistic support through intentional partnerships for transformative experiences



COMPASSION

an empathetic consciousness
of others expressed in caring
service



Compassion

Suites U

Food
Pantry

Basic
Needs



Our Sisters' Pantry
FELICIAN UNIVERSITY
FOOD SECURITY PROGRAM

“
Felician has not only provided an outstanding education but also an environment that encourages exploration, creativity, and passions.

Melany S. | Class of 2023

Felician
UNIVERSITY

Apply today at felician.edu

Suites | U

Student success, the Felician way.

JUSTICE AND PEACE

**FORGING RIGHT RELATIONSHIPS,
RECREATING A SUSTAINABLE
ENVIRONMENT, PROMOTING THE
COMMON GOOD – ALL IN THE
PURSUIT OF PEACE**



JUSTICE AND PEACE

- Restorative Justice lens through student policies and procedures
- GRIT (Goals, Resiliency, Integrity, and Tenacity) Program
- Circle of Care approach to support students and their support system
- Mission Integration and Campus Ministry
- Title V Grant –FALCONS CONNECT-Bilingual staff and critical services in one place



Let's stay connected!

THANK YOU

We will use list to share contacts for the purpose of information sharing, connections, and support.

